

# Burton Library Newsletter

## **LIBRARY RENOVATION**

This summer, the Library staff moved the collection so that the carpet could be replaced, and redesigned the layout of the library. The circulation desk is now located in the center of library in front of the entrance, next to our “Information Station” TV (which informs students of events on campus, cafeteria menu and hours, athletic schedules, etc.). The copy machines/printers have been moved to a “copy center” area where there is also a “charging station” for laptops and cell phones. The lobby has also been painted to give a more updated and modern look. We are excited about the latest changes and hope you will come by to see them.



## **TOM-TOM NEWSPAPER DIGITIZATION**

The Library staff is continuing to work with the Alumni Association to digitize materials from the Memorabilia Room. We began having the Tom-Tom Newspapers digitized last summer, and we have now finished with them. They are available for viewing at: <http://www.eccc.edu/tom-tom.html>

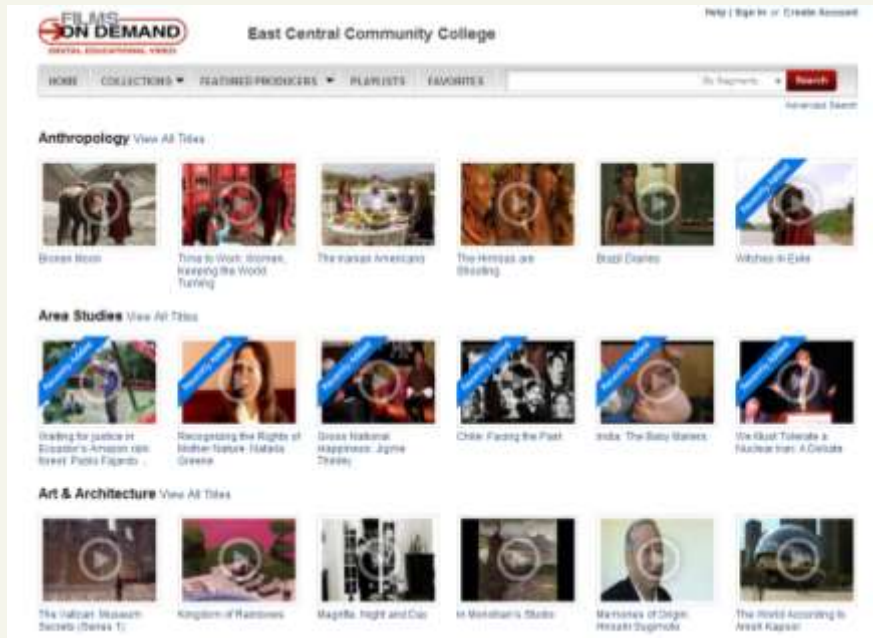
## **MEMORABILIA ROOM**

The Library staff has cataloged all of the items in the Memorabilia Room, so that they are now searchable in the library’s online catalog or Warrior Search on the library webpage. They are searchable by subject, donator, or person. We are still planning to add a picture of each item in the record.

## FILMS ON DEMAND STREAMING MEDIA DATABASE

<http://digital.films.com/Dashboard.aspx>

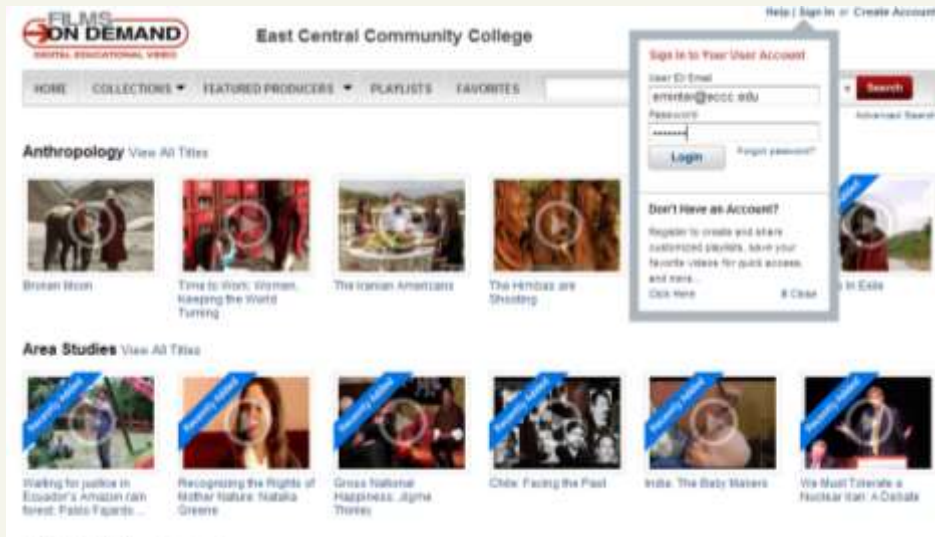
(Please contact library staff for database log-in information)



After logging into Films on Demand, you should see the above screen. You can browse through the “collections” or search for particular topics/subjects using the search box. We also recommend that you create your own account using the “Create Account” link in the top right, so that you can create your own playlists of videos for specific classes.

The screenshot shows the 'Create a new user' form. The form has a title 'Create a new user' and five input fields: 'First Name', 'Last Name', 'Email Address', 'Password', and 'Confirm Password'. Below the input fields is a 'Login' button.

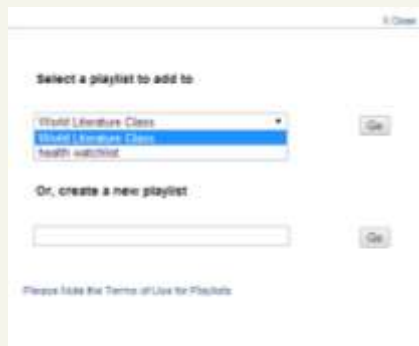
You will need to fill in the above form and create a password, then click on “Login.”



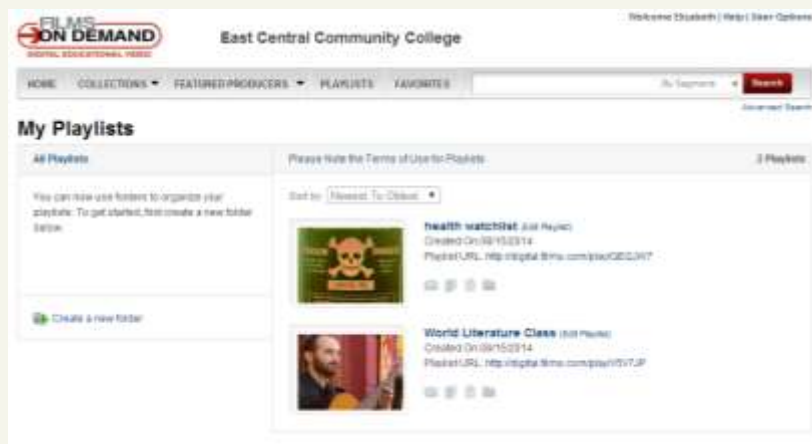
From now on, when you go to the database, you can log into your own personalized account and view your playlist.



To add a video to your playlist, click on the plus sign next to the video, as highlighted above.



Then create a new playlist or add the video to a playlist you have already created.



To see your playlists, just click on the "Playlists" link on the top banner and select the playlist you have created.



Your complete list of videos in a playlist will be in the bottom right corner. You can also copy the Playlist URL and paste it in Canvas to share with your students.

If you have any questions, please email [lhughes@eccc.edu](mailto:lhughes@eccc.edu) or [eminter@eccc.edu](mailto:eminter@eccc.edu) or call the library at ext. 219.